



舟山市通达塑料机械有限公司

Zhoushan Tongda Plastic Machinery Co., Ltd.

浙江嘉丞机械有限公司

Zhejiang Jiacheng Machinery Co., Ltd.

舟山市通达塑料机械有限公司

Zhoushan Tongda Plastic Machinery Co., Ltd.

舟山市定海区金塘镇西墩工业区
Xihou Industrial Zone, Jintang Town, Dinghai District, Zhoushan City

电话: 0574-87372173
TEL: 0574-87372173

联系人: 18067233733
CONTACT PERSON: Miss Wu 18067233733

[HTTP://www.barrelize.com](http://www.barrelize.com)
E-mail: sales@barrelize.com



公司简介篇 COMPANY PROFILE

承载信赖 坚持梦想

舟山市通达塑料机械有限公司(浙江嘉丞机械有限公司)位于中国的东海之滨,风光秀丽的千岛之城舟山市第四大岛——金塘岛西垵工业集聚园区,东与海天佛国普陀山隔水相望,西与国际著名深水大港北仑港相邻,交通十分便捷。

公司创建于1990年,通过30多年来茁壮成长,现拥有占地面积:8万多平方米,现有员工近600多名。年生产能力达:6万余套,年产值达:3亿元左右,被评为浙江省“高新技术企业”和舟山市最具活力“十佳企业”等。本公司为中国海天、中国泰瑞、广东伊之密、宁波海雄、华美达、创基等三十多家国内大中型塑机厂家配套;同时也为美国米拉克龙,韩国宇进等国外高标准企业配套,又远销韩国、日本、香港、伊朗、沙特阿拉伯等国家。

为规范企业管理,提高公司品质,降低资源消耗,更好增加核心竞争力,走新型工业道路的需求。公司于2003年通过:ISO9001:2000国际质量管理体系认证。2007年公司内部实行EPR管理系统,2013年初聘请台湾健峰企管集团进行“5S现场管理”和“中层培训”,有效应对市场新形势、新环境下的变化,确保企业更好生存和企业发展!

伴随塑胶行业日益发展,通达(嘉丞)强大的生产能力和研发能力,优良的设备和专业的售后服务,诚信的经营作风,以“海宇”品牌为核心,致力于中国塑机行业为目标,为客户提供优质的产品和优质的诚信服务!

Zhoushan Tongda Plastic Machinery Co., Ltd. (Zhejiang Jiacheng Machinery Co., Ltd.) is located in xihou industrial cluster Park, Jintang Island, the fourth largest island in Zhoushan City, a beautiful city of thousand islands, on the coast of the East China Sea. In the East, it is separated from Putuo Mountain, a Buddhist country in the sea, and in the west, it is adjacent to Beilun port, a famous deep-water port in the world. The transportation is very convenient.

Founded in 1990, through more than 30 years of vigorous growth, the company now has an area of more than 80000 square meters, with nearly 600 employees. With an annual production capacity of more than 60000 sets and an annual production value of about 300 million yuan, it is rated as the "high tech enterprise" in Zhejiang Province and the "top ten most dynamic enterprises" in Zhoushan City. The company is supporting more than 30 domestic large and medium-sized plastic machine manufacturers such as China Haitian, China Tairui, Guangdong Yizhi Mi, Ningbo Haixiong, Ramada, and Chuangji. It is also a foreign company such as Milacron, Korea Yujin, etc. Supported by high-standard enterprises, it is also exported to South Korea, Japan, Hong Kong, Iran, Saudi Arabia and other countries.

In order to standardize the enterprise management, improve the quality of the company, reduce the consumption of resources, better increase the core competitiveness, and take a new industrial road. The company passed ISO9001:2000 international quality management system certification in 2003. In 2007, the company implemented the EPR management system internally. In early 2013, Taiwan Jianfeng business management group was hired to carry out "5S field management" and middle-level training, effectively responding to the changes in the new market situation and new environment, and ensuring the better survival and development of the enterprise

With the increasing development of plastic industry, Tongda (Jiacheng) has strong production capacity and R & D capacity, excellent equipment and professional after-sales service, honest management style, with "Haiyu" brand as the core, committed to the goal of China's plastic machinery industry, to provide customers with high-quality products and high-quality honest service!



经营理念

Business philosophy

追求卓越、“注造”完美
Pursuit of excellence, "injection" perfection



品质政策

Quality policy

“注造”中国顶尖的高性能螺杆供应商
“Note” China's top high-performance screw supplier



企业文化

company culture

勤奋、务实、专注、进取、创新
Diligent, pragmatic, focused, enterprising, innovative



服务理念

Service philosophy

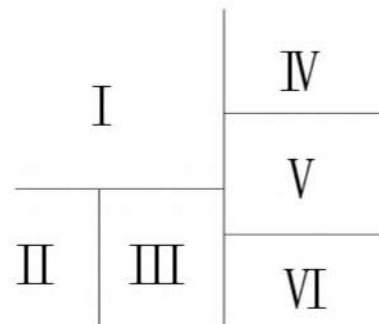
服务只有更好,没有最好;满意只有起点,没有终点
Service is better, no best; satisfaction only has a starting point, no end



www.barrelize.com



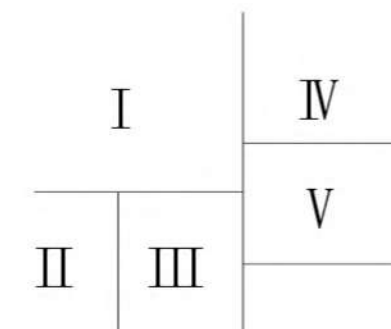
生产厂区篇
PRODUCTION FACTORY
 实力铸就辉煌



- IV 通达总厂鸟瞰
GENERAL FACTORY AERIAL VIEW
- V 通达二厂鸟瞰
SECOND FACTORY AERIAL VIEW
- VI 通达三厂鸟瞰
THIRD FACTORY AERIAL VIEW



团队协作篇
TEAM WORK
 精诚协作 凝心聚力



- IV 技术部门
TECHNICAL DEPARTMENT
- V 销售部门
SALES DEPARTMENT

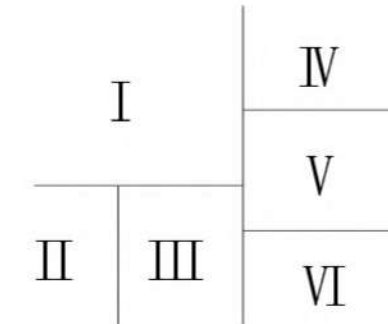
企业的责任不仅仅是提供优质的产品、创造利润,更重要的是培养人才、创造人才。优秀的人才储备对企业的长远发展提供了强有力的保障,本着以人为本不断创新的服务理念,赢得了客户的认可和信赖。

The responsibility of enterprises is not only to provide high-quality products and create profits, but also to cultivate and create talents. Excellent talent reserve provides a strong guarantee for the long-term development of the enterprise. Based on the service concept of people-oriented and continuous innovation, it has won the recognition and trust of customers





生产设备篇
PRODUCTION WORKSHOP
 专业的精工车间, 高端的生产设备



- IV 数控深钻孔
CNC DEEP DRILLING
- V 10M车床
10 METER LATHE
- VI 大车床
BIG LATHE

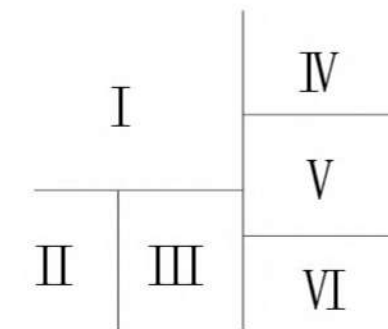
装备精良, 确保一流品质。卓越的品质来自严格的生产管理, 我们视产品质量为企业生命。关注生产过程中的每一个细节, 追求产品零缺陷。

Well equipped to ensure first-class quality. Excellent quality comes from strict production management. We regard product quality as the life of the enterprise. Pay attention to every detail in the production process and pursue zero defect of products.



PRODUCTION EQUIPMENT

工欲善其事必先利其器

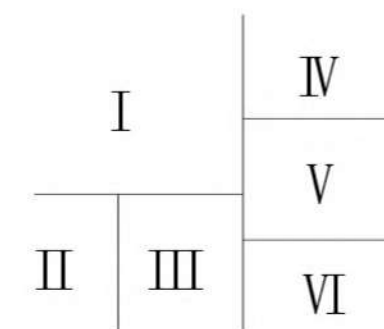


- I 加工机械臂
ROBOT ARM
- II 加工中心1
CNC MACHINING CENTER 1
- III 数控磨床
CNC GRINDING MACHINE
- IV 底径磨
BOTTOM DIAMETER GRINDING
- V 底径磨工作场景
BOTTOM DIAMETER GRINDING WORKING
- VI 合金喷焊机
ALLOY SPRAY WELDING MACHINE



HEAT TREATMENT

高端热处理加工工艺



- I 离心浇铸设备
CENTRIFUGE BARREL CASTING
- II 合金炉运行时
CENTRIFUGE BARREL CASTING
- IV 离子氮化炉
ION NITRIDING FURNACE
- V 气体氮化炉
GAS NITRIDING FURNACE
- VI 真空淬火炉
VACUUM QUENCHING FURNACE

公司拥有国际领先的螺杆、机筒表面处理工艺及其设备。超音速喷涂、表面高频或中频淬火、真空淬火、氮化等,更好的服务于客户。

The company has the world's leading screw, barrel surface treatment process and equipment. HVOF powder spray, HF/MF and vacuum quenching, nitriding, etc., to better serve customers.



TECHNOLOGY DETECTION


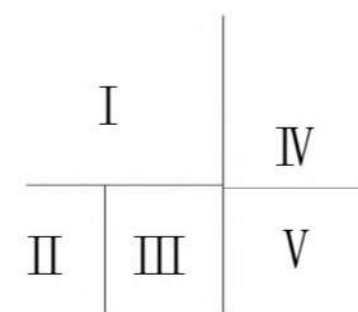
强劲研发能力及品质保证



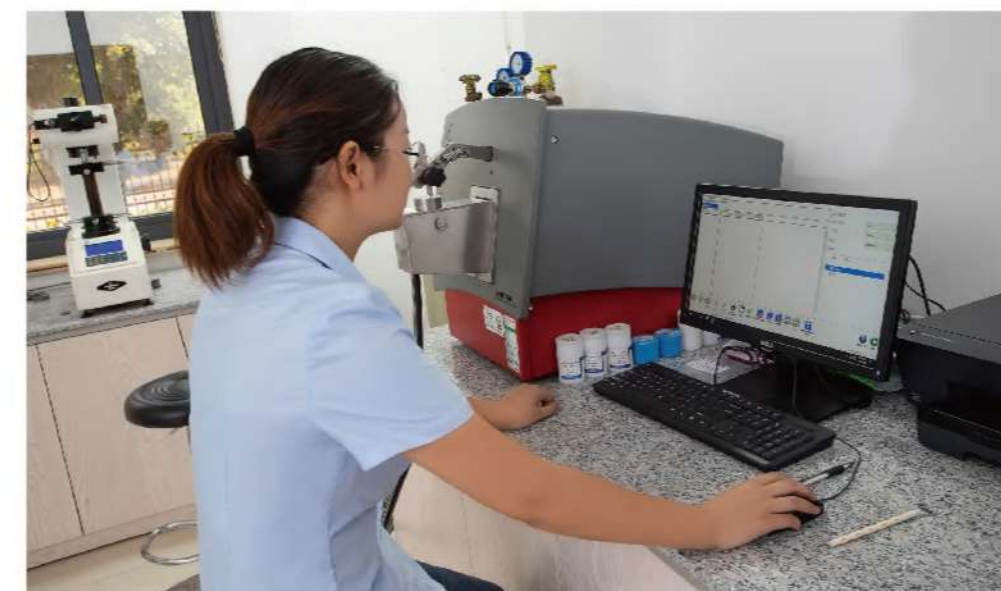
测量范围 Measuring range (mm):
 X轴 1200-1800 Y轴 1500-4000 Z轴 1000-1400
 X-axis 1200-1800 Y-axis 1500-4000 Z-axis 1000-1400

示值误差 Indication error:
 从 2.5L/200(μm) 起
 From 2.5L/200(μm)

探测误差 Detection error:
 从 2.5(μm) 起
 From 2.5(μm)

- IV 三坐标测量仪
VACUUM QUENCHING FURNACE
- V 光谱仪
FOUNDRY-MASTER UV



公司检测团队为业内资深人员，具有丰富的专业知识和经验。产品检测按照国家标准和国际标准的要求。我们针对不同机型产品定制了严格的品质检测标准，确保了产品制造过程的质量稳定。

The company's testing team is senior personnel in the industry, with rich professional knowledge and experience. Product testing shall be in accordance with national and international standards. We customized strict quality inspection standards for different types of products to ensure the quality stability of the product manufacturing process.



战略合作篇

WIN-WIN COOPERATION

承载信赖 感恩同行



海宇螺杆，数十年风雨兼程，产品销往大江南北以及世界各地，承载着客户的信赖，不断成长壮大，乘风破浪勇往直前。这里有企业的兢兢业业，更重要的是客户的长久信赖。

Haiyu screw, which has been used for decades, is sold to all over the country and around the world. It carries the trust of customers and continues to grow and prosper. Here, there is a company's dedication, and more importantly, the long-term trust of customers.

合作客户(Partner):

国内:中国海天、中国泰瑞、广东伊之密、宁波海雄、华美达、创基...

Domestic: China Haitian, China Tairui, Guangdong Yizhi Mi, Ningbo Haixiong, Ramada, Chuangji...

国外:美国米拉克龙, 韩国宇进...

Foreign: American Milacron, South Korea Yujin...



企业荣誉篇

ENTERPRISE HONOR

实力铸就辉煌 荣誉承载动力

权威认证 — 各项专利



螺杆车床加工的辅助装置
Auxiliary device for screw lathe machining

双波+Z形高混炼螺杆
Double wave + Z shape high mixing screw

新型PP全硬螺杆
New PP full hard screw

工程镜架机筒螺杆
Engineering frame barrel screw

合金炉
Alloy furnace

螺杆的自动攻丝装置
Screw automatic tapping device

注塑机筒加工的支撑装置
Supporting device for injection molding barrel processing

手套螺杆
Glove screw

抛光机
polisher

一种注射微发泡装置(发明)
Injection micro-foaming device (invention)

低压减载波浪形塑化螺杆
Low pressure load shedding wave plasticizing screw

七螺杆挤出机
Seven screw extruder

光学螺杆标
Optical screw

药品专用螺杆
Special screw for medicine

嘉丞ISO证书
Jiayu ISO certificate

三螺杆高压挤出机
Three screw high pressure extruder

料筒螺孔加工专用数控机床
CNC machine tool for processing threaded hole of barrel

硅胶螺杆
Silicone screw

全硬螺杆
Full hard screw

通达ISO证
Access to ISO certificate



氮化机筒 NITRIDING BARREL



氮化机筒
Nitriding cylinder

适用工况 Scope of Applicable	技术参数 technical parameter
适用于 GF 小于 10% 的无酸性塑胶, 如 PP\PS\AS\ABS\TPU\TPE Commonly used for acid-free plastics with GF less than 10%, such as PP\PS\AS\ABS\TPU\TPE	采用 38CrMoAlA 优质合金结构钢, 调质硬度 HB260-280, 氮化硬度 HV950±50 度, 氮化层深度 0.4-0.6MM, 脆性 ≤ 2 级 38CrMoAlA high-quality alloy structural steel, quenching and tempering hardness HB260-280, nitriding hardness HV950±50 degrees, nitride layer depth 0.4-0.6MM, brittleness ≤ 2

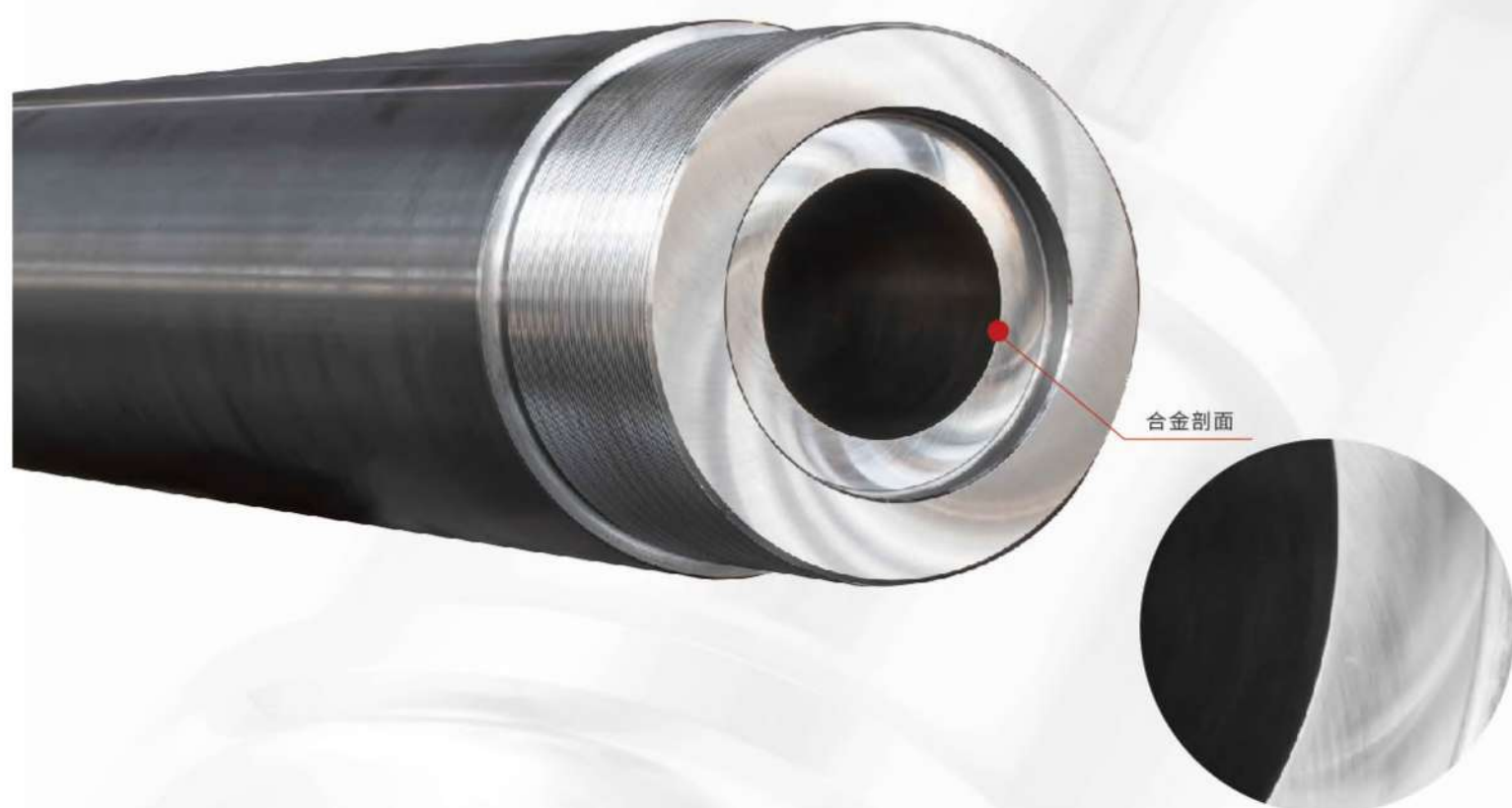
双金属机筒 BIMETALLIC BARREL



双金属机筒
Bimetallic barrel

适用工况 Scope of Applicable	技术参数 technical parameter
A: 适用于加 GF 小于 30% 的酸性塑胶, PC/ PA A: Commonly used for adding acid plastic with GF less than 30%, PC/PA	采用铁基合金离心烧注, 单边厚度 1.5-2MM, 表面硬度 HRC60-65 Centrifugal injection with iron-based alloy powder, single side thickness 1.5-2MM, surface hardness HRC60-65
B: 适用于加 GF 小于 35% 的酸性塑胶, PA/LCP/PBT B: Commonly used for adding acid plastic with GF less than 35%, PA/LCP/PBT	采用镍基合金 +15% 碳化钨离心烧注, 单边厚度 1.5-2MM, 表面硬度 HRC52-55 Centrifugal injection with nickel-based alloy +15% tungsten carbide powder, single side thickness 1.5-2MM, surface hardness HRC52-55
C: 适用于加 GF 小于 45% 的酸性塑胶 PEEK/PPS/LCP/ 阻燃 PA, C: It is generally used to add acid plastic PEEK/PPS/LCP/flame retardant PA with GF less than 45%.	采用镍基合金 +25% 碳化钨离心烧注, 单边厚度 1.5-2MM, 表面硬度 HRC58-62 Centrifugal injection with nickel base alloy + 25% tungsten carbide powder, single side thickness 1.5-2MM, surface hardness HRC58-62

镶套类机筒 INSERT BARREL



镶套类合金机筒
Insert barrel

适用工况 Scope of Applicable	技术参数 Technical parameter
A: 通用于加 GF 小于 30% 的酸性塑胶 A: Commonly used for adding acid plastic with GF less than 30%	采用铁基合金套, 单边厚度 3-5MM, 表面硬度 HRC60-65 Iron-based alloy sleeve, single side thickness 3-5MM, surface hardness HRC60-65
B: 通用于加 GF 小于 35% 的酸性塑胶 A: Commonly used for adding acid plastic with GF less than 35%	采用镍基合金 +15% 碳化钨合金套, 单边厚度 3-5MM, 表面硬度 HRC52-55 Nickel-based alloy +15% tungsten carbide alloy sleeve, single side thickness 3-5MM, surface hardness HRC52-55
C: 通用于加 GF 小于 45% 的酸性塑胶 A: Commonly used for adding acid plastic with GF less than 45%	采用镍基合金 +25% 碳化钨合金套, 单边厚度 3-5MM, 表面硬度 HRC58-62 Nickel-based alloy +25% tungsten carbide alloy sleeve, single side thickness 3-5MM, surface hardness HRC58-62

注塑机螺杆/氮化螺杆 NITRIDING SCREW



氮化螺杆
Nitriding screw

适用工况 Scope of Applicable	技术参数 Technical parameter
通用于普通无酸性低黏度, 不含 GF。如 ABS\PP\PS 等 It is generally used for ordinary acid-free low particle size and does not contain GF. Such as ABS\PP\PS, etc.	采用 38CrMoAlA 优质合金结构钢, 调质硬度 HB260-280, 氮化硬度 HV950±50 度, 氮化层深度 0.4-0.6MM, 脆性 ≤ 2 级表面光洁度 Ra0.04 38CrMoAlA high-quality alloy structural steel, quenching and tempering hardness HB260-280, nitriding hardness HV950±50 degrees, nitride layer depth 0.4-0.6MM, brittleness ≤ 2. Surface finish Ra0.04

注塑机螺杆/双金属螺杆 BIMETALLIC SCREW



双金属螺杆 / 42CrMo+ 合金电镀螺杆
Bimetallic Screw / 42CrMo + Alloy Plating Screw

适用工况 Scope of Applicable	技术参数 Technical parameter
A: 适用于加 GF 小于 30% 的塑胶 A: Commonly used for adding acid plastic with GF less than 30%	采用 38CrMoAlA 优质合金结构钢牙顶喷焊镍基合金粉, 合金厚度 ≥ 1.5MM。硬度 HRC53~56 Using 38CrMoAlA high-quality alloy structural steel, the top spray-welded nickel-based alloy powder, Alloy thickness ≥ 1.5MM. Hardness HRC53~56
B: 透明料 / 混色料 B: transparent material / color mixing material	采用 42CrMo 合金结构钢牙顶喷焊镍基合金粉, 合金厚度 ≥ 1.5MM, 电镀层厚度 0.03~0.05MM The 42CrMo alloy structural steel is sprayed with nickel-base alloy powder, and the thickness of the alloy is ≥ 1.5MM. Plating thickness 0.03~0.05MM

注塑机螺杆/全硬类螺杆 FULL HARD STEEL SCREW



全硬类螺杆
Full Hard Steel Screw

适用工况 Scope of Applicable	技术参数 Technical parameter
A: TPA100, 适用加 35%GF 以下的工程塑料, 高温料, PA+ GF/ LCP+ GF/ 高温 PC A: TPA100, suitable for engineering plastics with 35% GF or less, high temperature materials, PA+ GF/ LCP+ GF/ High Temperature PC	采用全硬粉末冶金钢 + 真空淬火工艺, 有效段淬火硬度 HRC57~59, 可电镀, 镀层厚度 0.03~0.05MM Fully hard powder metallurgy steel + vacuum quenching process, effective section quenching hardness HRC57~59, Electroplatable, coating thickness 0.03~0.05MM
B: TPA200, 适用加 45%GF 以下的工程塑料 B: TPA200, suitable for engineering plastics with 45% GF or less	采用全硬粉末冶金钢 + 真空淬火工艺, 有效段淬火硬度 HRC59~61, 可涂层, 涂层厚度 0.005~0.01MM Full hard powder metallurgy steel + vacuum quenching process, effective section quenching hardness HRC59~61, Can be coated, coating thickness 0.005~0.01MM

注塑机前体 PRECURSORS



注塑机前体
Injection molding machine precursor

适用工况 Scope of Applicable	技术参数 Technical parameter
A: 普通料 A: common material	采用 38CrMoAlA 优质合金结构钢, 调质硬度 HB260-280, 氮化硬度 HV950±50 度, 氮化层深度 0.4-0.6MM, 脆性≤ 2 级 38CrMoAlA high-quality alloy structural steel, quenching and tempering hardness HB260-280, nitriding hardness HV950±50 degrees, nitride layer depth 0.4-0.6MM, brittleness ≤ 2
B: 透明料 B: Transparent material	采用 42CrMo 合金结构钢, 调质硬度 HB250-280, 镀层厚度 0.02-0.03MM 42CrMo alloy structural steel, quenching and tempering hardness HB250-280, coating thickness 0.02-0.03MM
C: SKD61, 适用加 40%GF 以下的工程塑料 C: SKD61, suitable for engineering plastics with 40% GF or less	采用真空淬火, HRC50-55 Vacuum quenching, HRC50-55
D: SKD61+ 电镀, 适用高黏度、高温、高压等塑胶料 D: SKD61+ plating, suitable for high-granularity, high-temperature, high-pressure plastic materials	采用真空淬火 + 电镀, HRC50-55, 电镀层厚度 0.02-0.03MM, 表面硬度 HV900 以上。 Vacuum quenching + plating, HRC50-55, plating thickness 0.02-0.03MM, surface hardness HV900 or above.

注塑机喷嘴/弹簧喷嘴 NOZZLE



弹簧喷嘴
Spring Nozzle

注塑机喷嘴
Injection molding machine nozzle

适用工况 Scope of Applicable	技术参数 Technical parameter
A: 普通料 A: common material	采用 38CrMoAlA 优质合金结构钢, 调质硬度 HB260-280, 氮化硬度 HV950±50 度, 氮化层深度 0.4-0.6MM, 脆性≤ 2 级 Using 38CrMoAlA high-quality alloy structural steel, quenching and tempering hardness HB260-280, Nitriding hardness HV950±50 degrees, nitride layer depth 0.4-0.6MM, brittleness ≤ 2
B: 透明料 B: Transparent material	采用 42CrMo 合金结构钢, 调质硬度 HB250-280, 镀层厚度 0.02-0.03MM 42CrMo alloy structural steel, quenching and tempering hardness HB250-280, coating thickness 0.02-0.03MM
C: SKD61, 适用加 40%GF 以下的工程塑料 C: SKD61, suitable for engineering plastics with 40% GF or less	采用真空淬火, HRC50-55 Vacuum quenching, HRC50-55
D: SKD61+ 电镀, 适用高黏度、高温、高压等塑胶料 D: SKD61+ plating, suitable for high-granularity, high-temperature, high-pressure plastic materials	采用真空淬火 + 电镀, HRC50-55, 电镀层厚度 0.02-0.03MM, 表面硬度 HV900 以上。 Vacuum quenching + plating, HRC50-55, plating thickness 0.02-0.03MM, surface hardness HV900 or above.
E: 弹簧喷嘴 / 液压喷嘴 E: spring nozzle / hydraulic nozzle	采用 SKD61 真空淬火 Vacuum hardening with SKD61

注塑机小件 SCREW HEAD



注塑机小件
Screw Head

适用工况 Scope of Applicable	技术参数 Technical parameter
A: 普通料 A: common material	采用 38CrMoAlA 优质合金结构钢, 调质硬度 HB260-280, 氮化硬度 HV950±50 度, 氮化层深度 0.4-0.6MM, 脆性≤ 2 级 38CrMoAlA high-quality alloy structural steel, quenching and tempering hardness HB260-280, nitriding hardness HV950±50 degrees, nitride layer depth 0.4-0.6MM, brittleness ≤ 2
B: 透明料 B: Transparent material	采用 42CrMo 合金结构钢, 调质硬度 HB250~280, 镀层厚度 0.02~0.03MM 42CrMo alloy structural steel, quenching and tempering hardness HB250~280, coating thickness 0.02~0.03MM
C: SKD61, 适用加 40%GF 以下的工程塑料 C: SKD61, suitable for engineering plastics with 40% GF or less	采用真空淬火, HRC50-55 Vacuum quenching, HRC50-55
D: TPA100, 适用加 40%GF 以下的工程塑料 D: TPA100, suitable for engineering plastics with 40% GF or less	采用全硬粉末冶金钢 + 真空淬火工艺, 硬度 HRC57-59, 可电镀, 镀层厚度 0.02-0.03MM Full hard powder metallurgy steel + vacuum quenching process, hardness HRC57-59, electroplating, coating thickness 0.02-0.03MM
E: TPA200, 适用高粘度、高温、高压等塑胶料 E: TPA200, suitable for high viscosity, high temperature, high pressure and other plastic materials	采用全硬粉末冶金钢 + 真空淬火工艺, 硬度 HRC59-61, 可涂层, 涂层厚度 0.005-0.01MM Fully hard powder metallurgy steel + vacuum quenching process, hardness HRC59-61, coatable, coating thickness 0.005-0.01MM

挤出机机筒螺杆 EXTRUDER SCREW AND BARREL



挤出机机筒螺杆
Extruder barrel screw

适用工况 Scope of Applicable	技术参数 Technical parameter
PVC、PE、PP、ABS、TPE 等塑料的加工 Processing of PVC, PE, PP, ABS, TPE and other plastics	直径 (Diameter) ϕ 15mm- ϕ 300mm 最大长度 (Max Length): \leq 10000mm 长径比 (Length/Diameter Ratio) :L/D=18-40

锥双机筒螺杆

CONICAL TWIN SCREW AND BARREL



锥双机筒螺杆
Conical twin screw and barrel

适用工况 Scope of Application	技术参数 Technical parameter
UPVC/PP/PE 管材生产和型材生产 UPVC/PP/PE pipe production and profile production	机筒采用 38CrMoAlA 优质合金结构钢，调质硬度 HB260-280，氮化硬度 HV950±50 度，氮化层深度 0.4-0.6MM，脆性≤2 级； 螺杆采用 38CrMoAlA 优质合金结构钢牙顶喷焊镍基合金粉，合金厚度≥1.5MM。硬度 HRC53-56 The barrel is made of 38CrMoAlA high-quality alloy structural steel with quenched and tempered hardness of HB260-280. Nitriding hardness HV950 ± 50 degrees, nitride layer depth 0.4-0.6MM, brittleness ≤ 2 levels;The screw adopts 38CrMoAlA high-quality alloy structural steel crown spray-welded nickel-based alloy powder. Alloy thickness ≥ 1.5MM. Hardness HRC53-56

平双机筒螺杆

PARALLEL TWIN-SCREW AND BARREL



平双机筒螺杆
Flat double barrel screw

适用工况 Scope of Application	技术参数 Technical parameter
PA/PET/PP/PE/XLPE/ 母粒，不易分解的塑料，共混、填充、玻纤增强 PA/PET/PP/PE/XLPE/masterbatch, plastic that is not easily decomposed, blended, filled, glass fiber reinforced	机筒采用 38CrMoAlA 优质合金结构钢，调质硬度 HB260-280，氮化硬度 HV950±50 度，氮化层深度 0.4-0.6MM，脆性≤2 级； 螺杆采用 38CrMoAlA 优质合金结构钢牙顶喷焊镍基合金粉，合金厚度≥1.5MM。硬度 HRC53-56 The barrel is made of 38CrMoAlA high-quality alloy structural steel with quenched and tempered hardness of HB260-280. Nitriding hardness HV950 ± 50 degrees, nitride layer depth 0.4-0.6MM, brittleness ≤ 2 levels;The screw adopts 38CrMoAlA high-quality alloy structural steel crown spray-welded nickel-based alloy powder. Alloy thickness ≥ 1.5MM. Hardness HRC53-56